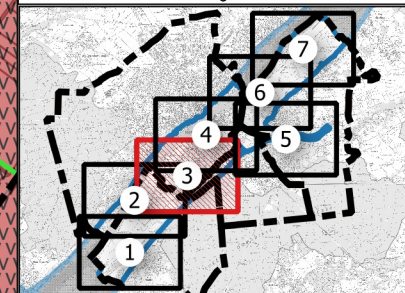
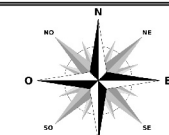


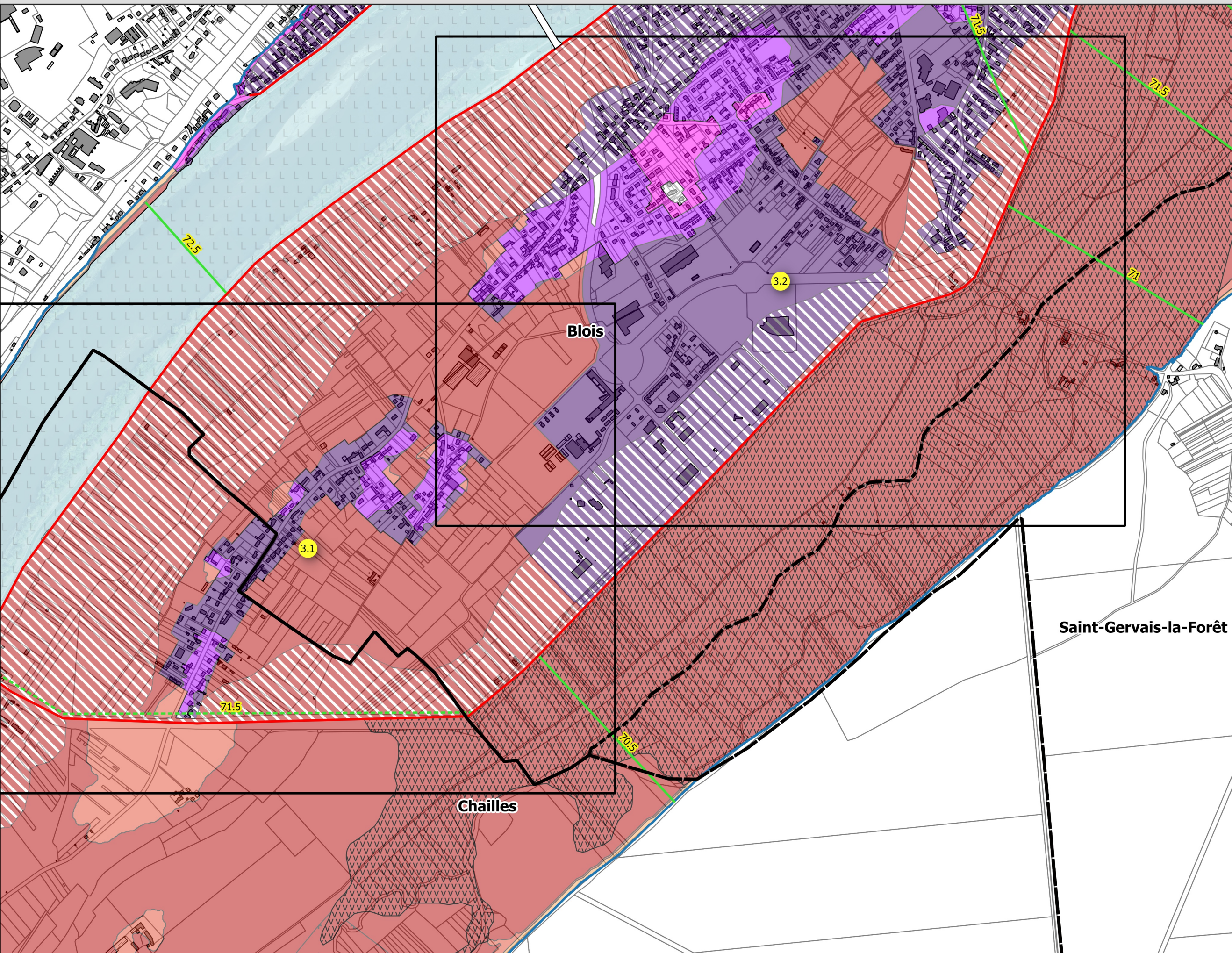
PPRI Loire - communes de Blois, Chailles, Saint-Gervais-la-Forêt et Vineuil.
Zonage réglementaire au 1/10 000ème

3 / 7



Légende

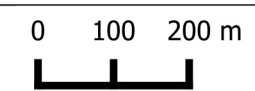
- Limite de commune
- Dignes
- Cote de la crue de référence
- Intermédiaire
- PHE
- Zonage réglementaire
- Lit mineur
- A-ZDE (zone de dissipation d'énergie)
- A-vitesse
- A-Très fort (h>2.50m)
- A-Très fort- plantation (h>2.50m)
- A-Fort (1m<h<2.50m)
- A-Modéré (h<1m)
- B-ZDE (zone de dissipation d'énergie)
- B-Très fort (h>2.50m)
- B-Fort (1m<h<2.50m)
- B-Modéré (h<1m)
- Hors d'eau



Saint-Gervais-la-Forêt

Chailles

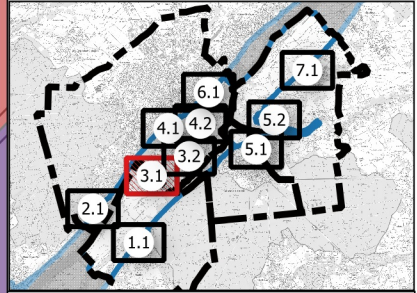
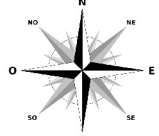
Blois



DDT41 SPRICER - septembre 2020
© IGN 2018 BDCARTO
BDORTHO Cadastre DGI
Document :

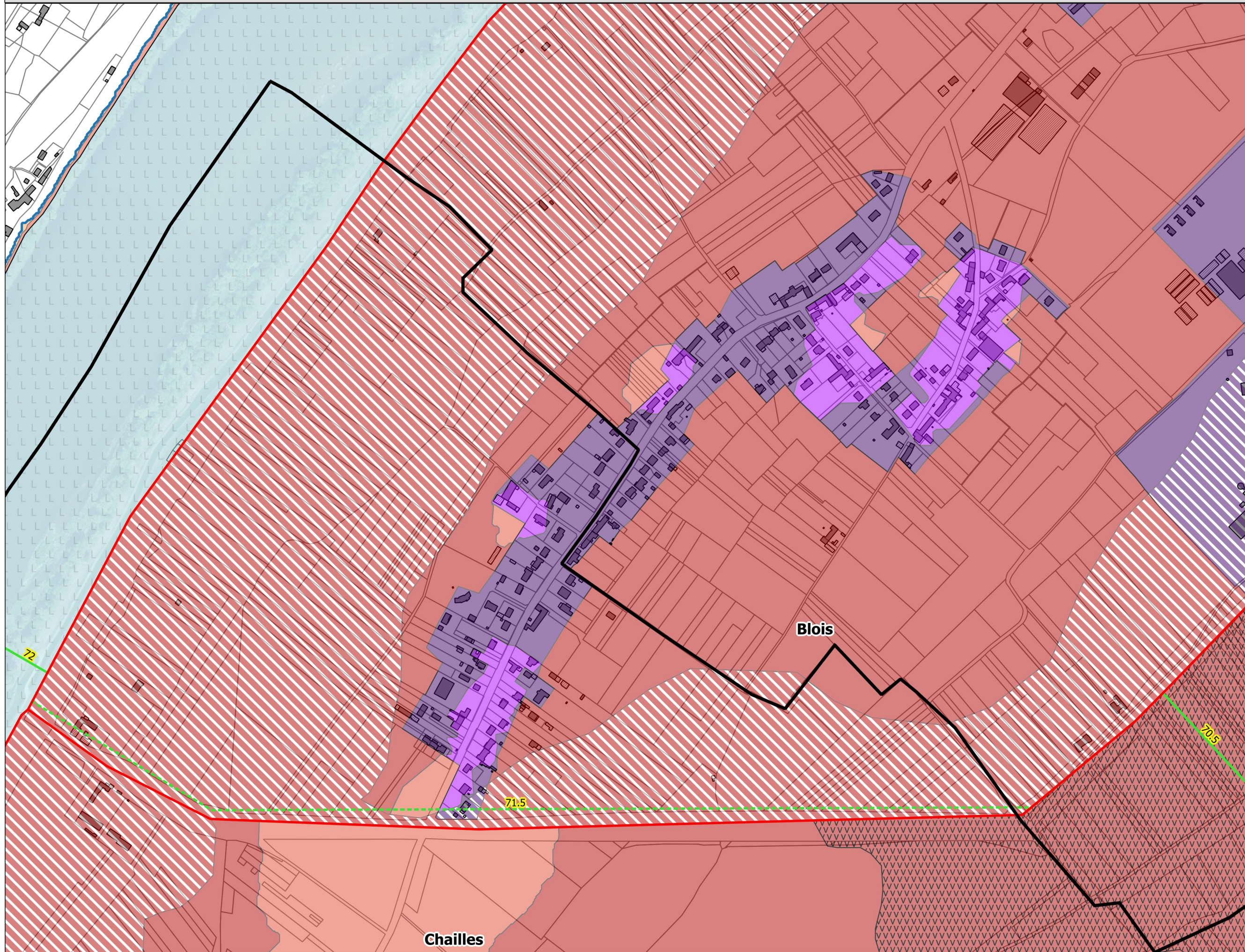
Révision du PPRI Loire - commune de Vineuil. Zonage réglementaire zoom au 1/5 000ème

3.1



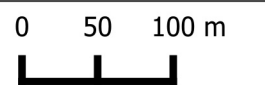
Légende

- Limite de commune
- Dignes
- Cote de la crue de référence
 - Intermédiaire
 - PHE
- Zonage réglementaire
 - Lit mineur
 - A-ZDE (zone de dissipation d'énergie)
 - A-vitesse
 - A-Très fort (h>2.50m)
 - A-Fort (1m<h<2.50m)
 - A-Modéré (h<1m)
 - B-ZDE (zone de dissipation d'énergie)
 - B-Très fort (h>2.50m)
 - B-Fort (1m<h<2.50m)



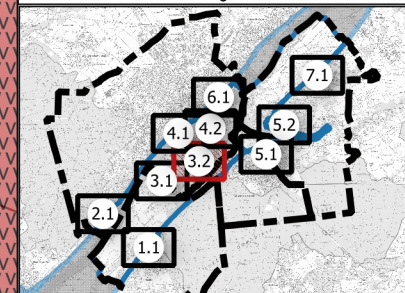
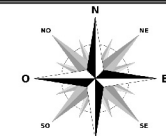
Blois

Chailles
















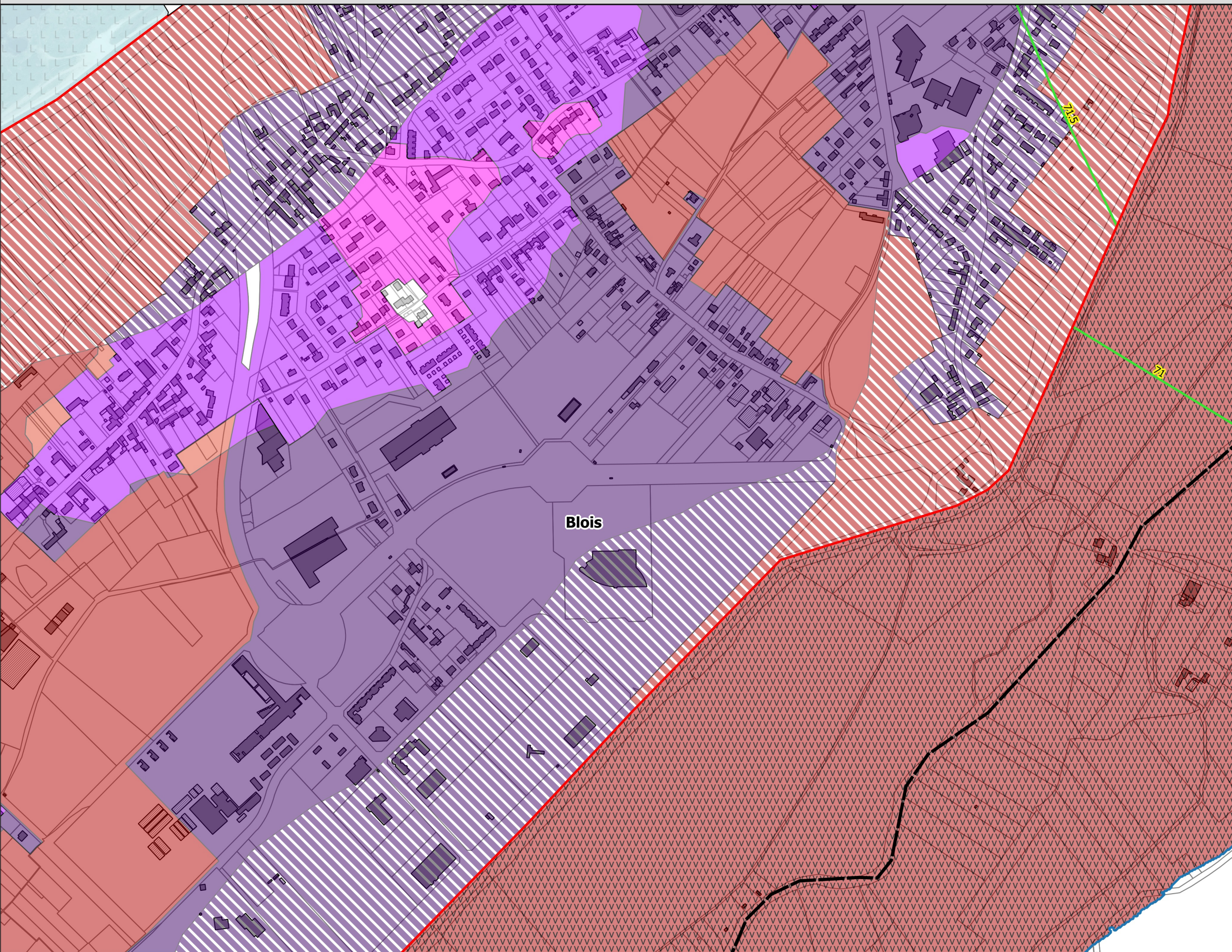
Révision du PPRI Loire - commune de Vineuil.
Zonage réglementaire zoom au 1/5 000ème

3.2

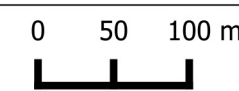


Légende

-  Limite de commune
-  Dignes
- Cote de la crue de référence
-  PHE
- Zonage réglementaire
-  Lit mineur
-  A-ZDE (zone de dissipation d'énergie)
-  A-vitesse
-  A-Très fort (h>2.50m)
-  A-Fort (1m<h<2.50m)
-  B-ZDE (zone de dissipation d'énergie)
-  B-Très fort (h>2.50m)
-  B-Fort (1m<h<2.50m)
-  B-Modéré (h<1m)
-  Hors d'eau



Blois



DDT41 SPRICER - septembre 2020
©IGN 2018 BDCARTO
BDORTHO
Cadastre DGI
Document : PPRI_Loire_Blois_2019.qgs